

APRIL 2001

Custom Home

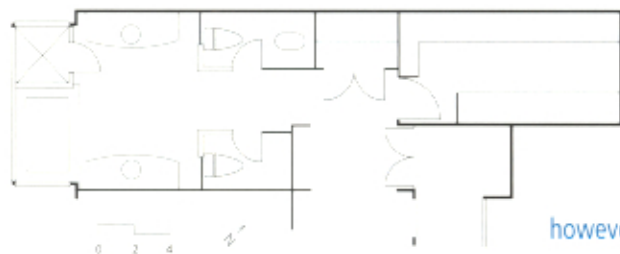
THE ART AND CRAFT OF CUSTOM HOME BUILDING / A HANLEY-WOOD PUBLICATION

2001 Kitchen & Bath Design Guide



Lookout Shower

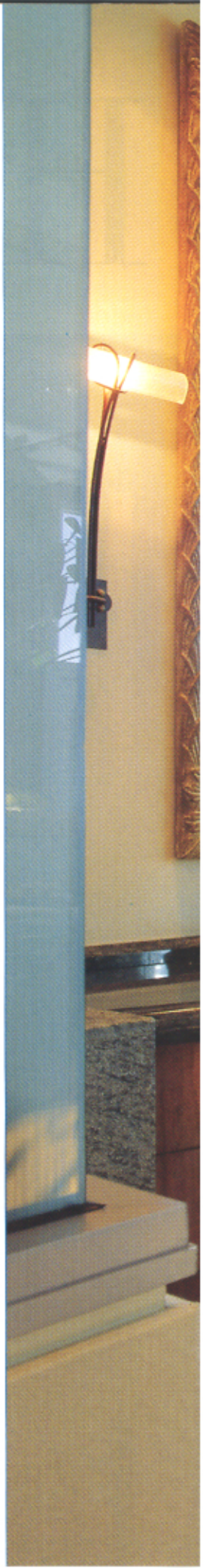
The beach at West Malibu is one of Southern California's treasures. And with an unusually wide lot set low in the dunes that roll down to the beach, the owners of this master bath intended to make the most of it. "The house is oriented around the use of the beach," says architect David Gray, "and the master bath was considered an important part of that orientation." Upon entering from the bedroom, that orientation is unmistakable. From a 4-foot-wide corridor, the room telescopes out to a high, barrel-vaulted bay that keeps a constant watch on the shore. ■ Lining the walls of this coastal observatory are his-and-hers toilet chambers and broad teak vanities topped with polished granite counters. The mirror-image symmetry of these elements lends a soothing sense of order. To prevent claustrophobia while preserving privacy, the toilet chambers filter room light through frosted-glass doors and interior corner windows. ■ The front-row seats,



however, are out in the steel-framed bay, which is glazed on

three sides from beltline to ceiling. Here, a granite-lined tub is twinned with a glass-and-granite shower. "The clients specifically wanted to sit in the tub and look out at the ocean," Gray says, "and yet, when they stood up . . ." To avoid any awkward encounters with beachcombing neighbors, the architect specified lower windows with electronically operated integral blinds. ■ Like the floors, the granite of the bathing surfaces matches that of the polished counters, but in a non-slip "flamed" finish. ■

Project Credits: Builder: Fort Hill Construction, Los Angeles; Architect: David Lawrence Gray Architects, Santa Monica, Calif.; Project size: 575 square feet; Construction cost: Withheld; Photographer: Claudio Santini. ■ Resources: Bathroom plumbing fixtures: American Standard, Circle 490 and Kroin, Circle 491; Bidet: American Standard, Circle 492; Hardware: Kroin, Circle 493.





The teak and granite surfaces of this West Malibu, Calif., master bath create a sedately handsome perch from which to view the sun-washed beach beyond.